



## AQUA 8

The Aqua 8 spa, with room for five, has been manufactured for domestic and residential use. It gives the most complete massage circuit on the market and is particularly suitable for tall people, who can enjoy a relaxing or therapeutic spa without the discomfort they may find in other spas that are too shallow or narrow.

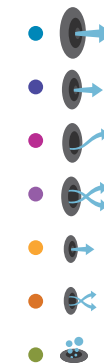
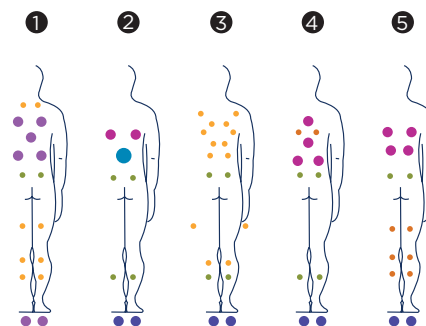
Whatever the spa user's body type or height, the 52 hydromassage jets and 16 air nozzles in the Aqua 8 spa give an adjustable power massage that reaches all the muscles in the body.

**Positions:** 5 (3  / 2 )

**Measures:** 233 x 233 x 91



Optional:





ref: 52666

### Technical specifications

Measures ( ±2cm)	233 x 233 x 91
Positions (seats/loungers)	5 (3 / 2)
Water capacity (l)	1.610
Weight (empty / full) (kg)	378 / 1.988

Cabinet coating	Graphite Woodermax / Thunder Woodermax / Walnut Woodermax / Butterfly Woodermax
Outdoor cabinet (Soft Rain Dark Grey)	Optional
Without cabinet	Optional
Acrylic colours*	44 / 72 / 59 / 18 / 64

FEATURES	
Total massage points	<b>69</b>
Massage Jets	52
Air Nozzles	16
Waterfall	1
Water fountains	2
Headrests	3
Digital Control Panel	Principal + Aux
Ultraviolet Treatment	•
Galvanised metal structure	•
ABS base	•
Energy Saving Cover	•
EcoSpa	Optional
Nordic Insulation System	Optional

FINISHES	
Colour Sense	5 LED + illuminated accessories
Pure Line Lighting	Optional
Bluetooth surround sound	Optional
Stainless steel nozzles	•
Stainless steel handrail	•
Aromatherapy	•
Programmable WiFi Touch Panel	Optional
Flexible Massage	-

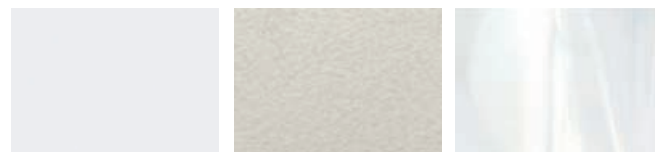
MESSAGE PUMPS	
Water massage	2 x 2.200 W / 3 HP
Relax Impact Pump	1.150 W

FILTRATION AND HEATING	
Recirculation pump	250 W
Water heater	3.000 W
Type of filter	Cartridge
High Performance Water Care	•

POWER SUPPLY	
Power requirement LOW AMP (W) / (A) to 230 V	6.000 W / 25,9 A
Voltage	230 V / 400 V III

### Shell finishes

#### Acrylic colors



44 White

72 Cameo

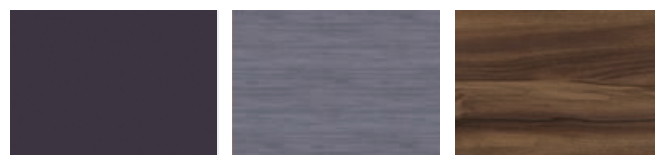
59 Sterling



18 Sand

64 Pearl Shadow

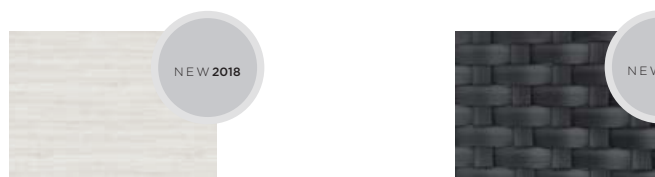
### Furniture finishes



Graphite

Thunder

Walnut



Butterfly

Dark Grey

### Accessories



WALNUT step  
(or GRAPHITE model)



Cover lifter



Water care



According to our policy of constant evolution, we reserve the right to modify the specifications in part or in whole without forewarning.



## AQUA 8

Le spa Aqua 8, de 5 places, fabriqué pour un usage résidentiel et domestique, offre le circuit de massage le plus complet du marché et satisfait les besoins de personnes de grande taille qui peuvent profiter d'un bain relaxant ou thérapeutique en étant à leur aise.

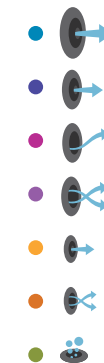
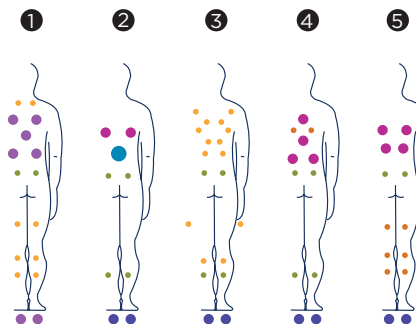
Avec ses 52 jets d'hydromassage et ses 16 buses soufflantes, le jacuzzi Aqua 8 atteint tous les muscles du corps pour un massage à puissance réglable, indépendamment de la constitution ou de la taille du baigneur.

**Positions:** 5 (3  / 2 )

**Dimensions:** 233 x 233 x 91



Option:





ref: 52666

## Caractéristiques techniques

Dimensions ( ±2cm)	233 x 233 x 91
Positions (assises / allongées)	5 (3 / 2)
Volume Eau (l)	1.610
Poids (vide / plein) (kg)	378 / 1.988

Type Revêtement Meuble Extérieur	Graphite Woodermax / Thunder Woodermax / Walnut Woodermax / Butterfly Woodermax
Habillage extérieur (Soft Rain Dark Grey)	Option
Sans habillage	Option
Couleurs Acrylique*	44 / 72 / 59 / 18 / 64

PRESTATIONS	
Total Points de Massage	<b>69</b>
Jets massage	52
Buse air	16
Cascades Eau	1
Sources Eau	2
Appuie-tête	3
Panneau de Commande Numérique	Principal + Aux
Ultraviolet Treatment UV	•
Structure Métal Galvanisé	•
Base ABS	•
Energy Saving Cover	•
EcoSpa	Option
Nordic Insulation System	Option

FINITIONS	
Colour Sense	5 LED + Accessoires éclairés
Pure Line Lighting	Option
Surround Bluetooth Audio	Option
Buses Inoxydable	•
Barre Inoxydable	•
Aromatherapy	•
Touch Panel Programmable Wifi	Option
Flexible Massage	-

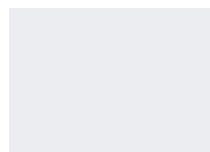
POMPES DE MASSAGE	
Massage d'eau	2 x 2.200 W / 3 CV
Relax Impact Pump	1.150 W

FILTRATION ET CHAUFFAGE	
Pompe de recirculation	250 W
Chauffage d'eau	3.000 W
Type de filtre	Cartouche
High Performance Water Care	•

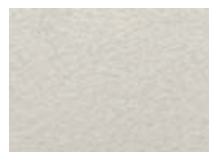
COURANT ÉLECTRIQUE	
Puissance maximale LOW AMP (W) / (A) 230 V	6.000 W / 25,9 A
Tension	230 V / 400 V III

### Matériel des Spas

#### Couleurs Acrylique



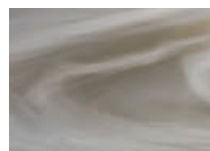
44 White



72 Cameo



59 Sterling



18 Sand

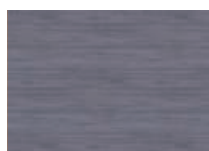


64 Pearl Shadow

### Bois des Spas



Graphite



Thunder



Walnut



Butterfly



Dark Grey

### Accessories SPA



*Escalier NOYER  
(ou GRAPHITE modèle)*



*Ramasse Couverture*



*Kit de désinfection*



Dans le cadre de notre politique d'améliorations constantes, nous nous réservons le droit de modifier/d'amender nos spécifications n'importe quand et sans aucun préavis.



## AQUA 8

Der Spa Aqua 8 mit 5 Plätzen wird für die Nutzung im Privat- und Wohnbereich hergestellt. Er bietet den umfassendsten Massagezyklus auf dem Markt und eignet sich besonders für große Menschen, die darin ein entspannendes oder therapeutisches Bad genießen können, ohne wie in flachen, engen Whirlpools unbequem sitzen zu müssen.

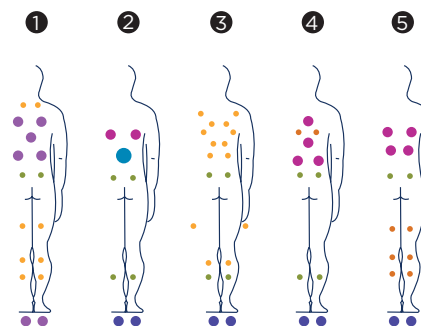
Mit seinen 52 Hydromassagejets und 16 Luftinjektoren erreicht der Whirlpool Aqua 8 alle Muskeln des Körpers mit einer Massage in regulierbarer Stärke, unabhängig von der Größe oder dem Körperumfang des Benutzers.

**Positionen:** 5 (3  / 2 )

**Dimensionen:** 233 x 233 x 91



Option:





ref: 52666

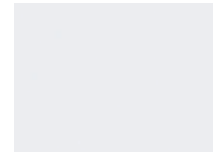
**Ausstattung**

Abmasse ( ±2cm)	233 x 233 x 91
Positionen (sitze/ liege)	5 (3 / 2)
Volumen (l)	1.610
Gewicht (leer/befüllt) (kg)	378 / 1.988
Verkleidung	Graphite Woodermax / Thunder Woodermax / Walnut Woodermax / Butterfly Woodermax
Gartenmöbel (Soft Rain Dunkelgrau)	Option
Ohne Rahmen	Option
Acrylfarben*	44 / 72 / 59 / 18 / 64
<b>LEISTUNGEN</b>	
Massagepunkte gesamt	<b>69</b>
Massagedüsen	52
Luftdüsen	16
Wasserfälle	1
Wasserquellen	2
Kopfstützen	3
Digitales Bedienfeld	Digitale Steuerung + Aux
Ultraviolet Treatment UV	•
Verzinkter Metallrahmen	•
ABS-Platte	•
Energy Saving Cover	•
EcoSpa	Option
Nordic Insulation System	Option
<b>UNTERHALTUNG</b>	
Colour Sense	5 LED + Beleuchtungszubehör
Pure Line Lighting	Option
Surround Bluetooth Audio	Option
Düsen Edelstahl	•
Edelstahlstange	•
Aromatherapie	•
Programmierbares Touch Panel Wifi	Option
Flexible Massage	-
<b>MASSAGEPUMPEN</b>	
Wassermassage / Jetpumpe	2 x 2.200 W / 3 HP
Relax Impact Pump / Gebläse	1.150 W
<b>FILTER UND HEIZUNG</b>	
Silent Pump / Umwälzpumpe	250 W
Wassererhitzer	3.000 W
Filtertyp	Kartuschenfilter
High Performance Water Care	•
<b>ELEKTRISCHE SPANNUNG</b>	
Leistung Option niedrige Stromstärke(W)/(A)230 V	6.000 W / 25,9 A
Stromspannung	230 V / 400 V III

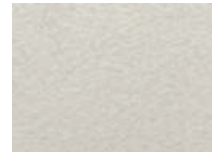


Ausführungstyp Becken

**Acrylfarben**



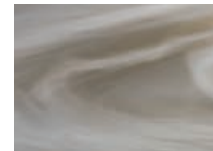
44 White



72 Cameo



59 Sterling



18 Sand

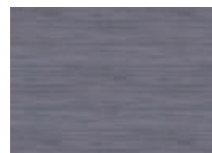


64 Pearl Shadow

Verkleidungstyp Außenrahmen



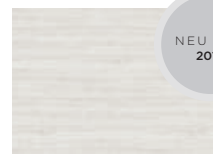
Graphite



Thunder



Walnut



Butterfly



Dark Grey

Zubehör



*Spa-Leiter NUSSBAUM  
(oder Woodermax GRAPHIT)*



*Abdeckvorrichtung*



*Wasserpflege-Kit*

Im Rahmen unserer Bemühungen um ständige Verbesserungen behalten wir uns das Recht vor, ohne weitere Bekanntmachungen Änderungen an der Konstruktion und den technischen Daten vorzunehmen.



## AQUA 8

El spa Aqua 8, de 5 plazas, fabricado para el uso residencial y doméstico, ofrece el circuito de masaje más completo del mercado y satisface las necesidades de personas de elevada estatura, que pueden recibir un baño relajante o terapéutico sin las incomodidades de otros spas poco profundos o estrechos.

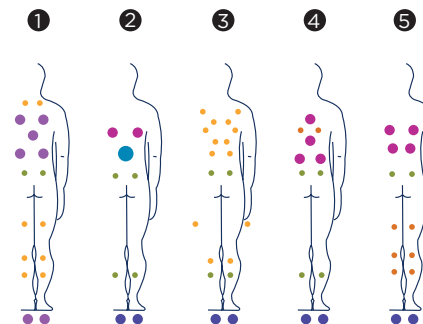
Con sus 52 jets de hidromasaje y sus 16 inyectores de aire, el spa Aqua 8 alcanza todos los músculos del cuerpo en un masaje de potencia regulable, independientemente de la complejión o altura del bañista.

**Posiciones:** 5 (3 / 2 )

**Medidas:** 233 x 233 x 91



Opcional:



**Características técnicas**

ref: 52666

Medidas ( ±2cm)	233 x 233 x 91
Posiciones (sentado / tumbado)	5 (3 / 2)
Volumen Agua (l)	1.610
Peso (vacío / lleno) (kg)	378 / 1.988

Tipo Revestimiento Mueble Exterior	Graphite Woodermax / Thunder Woodermax / Walnut Woodermax / Butterfly Woodermax
Mueble Exterior Soft Rain (Dark Grey)	Opcional
Sin revestimiento	Opcional
Colores Acrílico*	44 / 72 / 59 / 18 / 64

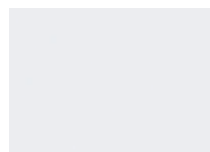
PRESTACIONES	
Total Puntos de Masaje	<b>69</b>
Jets masaje agua	52
Boquillas masaje aire	16
Cascadas	1
Fuentes de Agua	2
Reposacabezas	3
Panel de Control Digital	Principal + Aux
Ultraviolet Treatment UV	•
Estructura Metálica Galvanizada	•
Base ABS	•
Energy Saving Cover	•
EcoSpa	Opcional
Nordic Insulation System	Opcional

ACABADOS	
Colour Sense	5 LED + Accesorios iluminados
Pure Line Lighting	Opcional
Surround Bluetooth Audio	Opcional
Jets/Boquillas Inoxidable	•
Barra Inoxidable	•
Aromatherapy	•
Touch Panel Programable Wifi	Opcional
Flexible Massage	-

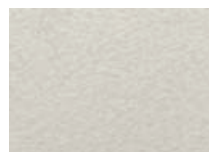
BOMBAS DE MASAJE	
Masaje de agua	2 x 2.200 W / 3 CV
Relax Impact Pump	1.150 W

FILTRACIÓN Y CALEFACCIÓN	
Bomba de recirculación	250 W
Calentador de agua	3.000 W
Tipo de filtro	Cartucho
High Performance Water Care	•

CORRIENTE ELÉCTRICA	
Potencia requerida LOW AMP (W) / (A) a 230 V	6.000 W / 25,9 A
Voltaje	230 V / 400 V III

**Acabados Casco****Colores Acrílico**

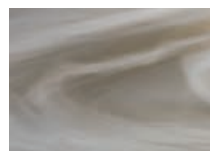
44 White



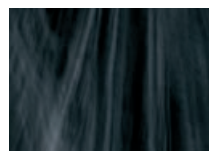
72 Cameo



59 Sterling



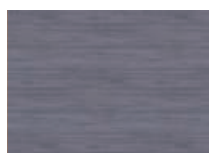
18 Sand



64 Pearl Shadow

**Acabados Mueble**

Graphite



Thunder



Walnut



Butterfly



Dark Grey

**Accesorios***Escalera NOGAL  
(o modelo GRAFITO)**Recoge cubiertas**Kit de desinfección*

Como parte de nuestra política de mejoramiento continuo, nos reservamos el derecho de modificar el diseño y/o especificaciones sin previo aviso.





## AQUA 8

La spa Aqua 8, a 5 posti, fabbricata per l'uso residenziale e domestico, offre il circuito di massaggio più completo del mercato e soddisfa le necessità di persone di statura elevata, che possono farsi un bagno rilassante o terapeutico senza le scomodità di altre spa poco profonde o strette.

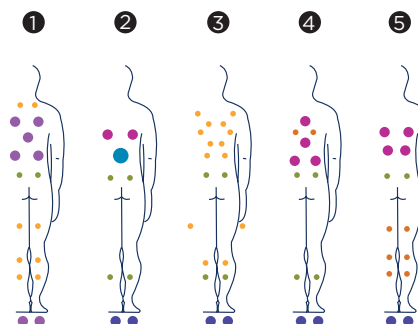
Con i suoi 52 jet di idromassaggio e i suoi 16 iniettori d'aria, la spa Aqua 8 raggiunge tutti i muscoli del corpo con un massaggio a potenza regolabile, indipendentemente dalla corporatura o dall'altezza dell'utente.

**Posizioni:** 5 (3  / 2 )

**Misure:** 233 x 233 x 91



Opzionale:



**Caratteristiche tecniche**

ref. 52666

Misure ( ±2 cm)	233 x 233 x 91
Posizioni (seduto / sdraiato)	5 (3 / 2)
Volume acqua (l)	1.610
Peso (vuota/piena) (kg)	378 / 1.988

Tipo di rivestimento del mobile esterno	Graphite Woodermax / Thunder Woodermax / Walnut Woodermax / Butterfly Woodermax
Rivestimento esterno (Soft Rain Dark grey)	Opzionale
Senza rivestimento	Opzionale
Colori Acrilico*	44 / 72 / 59 / 18 / 64

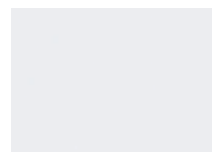
PRESTAZIONI	
Totale punti di massaggio	<b>69</b>
Getti di massaggio	52
Bocchette di aria	16
Cascate d'acqua	1
Fontane d'acqua	2
Poggiatesta	3
Pannello di controllo digitale	Principal + Aux
Ultraviolet Treatment UV	•
Struttura metallica galvanizzata	•
Base ABS	•
Energy Saving Cover	•
EcoSpa	Opzionale
Nordic Insulation System	Opzionale

FINITURE	
Colour Sense	5 LED + Accessori illuminati
Pure Line Lighting	Opzionale
Surround Bluetooth Audio	Opzionale
Jet/Bocchette Inossidabile	•
Barra inossidabile	•
Aromatherapy	•
Touch Panel Programmabile Wi-Fi	Opzionale
Flexible Massage	-

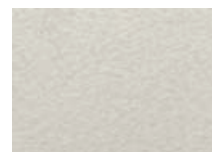
POMPE DI MASSAGGIO	
Massaggio ad acqua	2 x 2.200 W / 3 CV
Relax Impact Pump	1.150 W

FILTRAGGIO E RISCALDAMENTO	
Pompa di ricircolo	250 W
Scaldacqua	3.000 W
Tipo di filtro	Cartuccia
High Performance Water Care	•

CORRENTE ELETTRICA	
Potenza necessaria LOW AMP (W) / (A) a 230 V	6.000 W / 25,9 A
Tensione	230 V / 400 V III

**Materiale Vasca****Colori superficie acrilica**

44 White



72 Cameo



59 Sterling



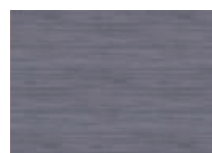
18 Sand



64 Pearl Shadow

**Mobile in sintetico**

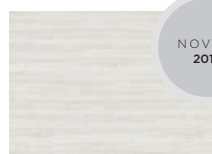
Graphite



Thunder



Walnut



Butterfly



Dark Grey

**Accessori***Escaletta NOCE  
(o GRAFITE)**Ritira-coperture**Kit di disinfezione*

Come parte della nostra politica di miglioramento continuo, ci riserviamo il diritto di modificare il design e/o le specifiche tecniche senza preavviso.



## AQUA 8

De Aqua 8-spa voor vijf personen is bedoeld voor thuisgebruik. Met het meest complete massagecircuit op de markt is hij bij uitstek geschikt voor lange mensen, die van een ontspannende of therapeutische spa-ervaring kunnen genieten zonder het ongemak van een te ondiepe of te smalle spa.

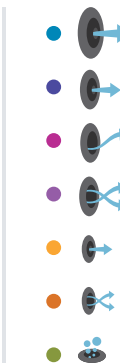
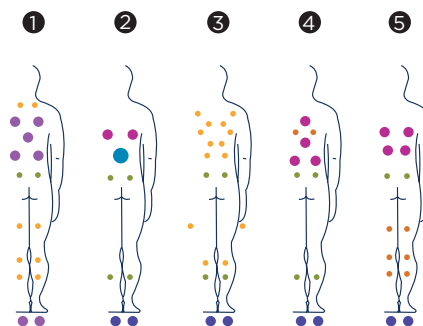
De 52 hydromassagejets en 16 luchtinjectoren in de Aqua 8-spa zorgen voor een regelbare massage die alle spieren in het lichaam bereikt, voor alle gebruikers.

**Posities:** 5 (3 / 2 )

**Afmetingen:** 233 x 233 x 91



Optioneel:





ref: 52666

## Technische eigenschappen

Afmetingen (± 2 cm)	233 x 233 x 91
Posities (zit-/ligplaatsen)	5 (3 / 2)
Watervolume (L)	1.610
Gewicht (leeg/vol) (kg)	378 / 1.988

Coating raamwerk	Graphite Woodermax / Thunder Woodermax / Walnut Woodermax / Butterfly Woodermax
Raamwerk buitenkant	Optioneel
Zonder raamwerk	Optioneel
Acrylkleuren*	44 / 72 / 59 / 18 / 64

KENMERKEN	
Aantal massagepunten	<b>69</b>
Massagejets	52
Luchtuitlaten	16
Waternival	1
Waterfonteinen	2
Hoofsteunen	3
Digitaal bedieningspaneel	Hoofd + Hulp
Ultraviolet behandeling	•
Structuur in gegalvaniseerd metaal	•
Basis in ABS	•
Energy Saving Cover	•
EcoSpa	Optioneel
Nordic Insulation System	Optioneel

AFWERKINGEN	
Colour Sense	5 LED + Verlichte accessoires
Pure Line Lighting	Optioneel
Surround Bluetooth Audio	Optioneel
Roestvrijstalen injectoren	•
Roestvrijstalen stang	•
Aromatherapy	•
Programmeerbaar wifi-aanraakscherm	Optioneel
Flexible Massage	-

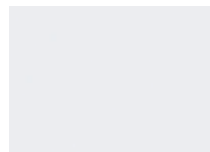
MESSAGEPOMPEN	
Watermassage	2 x 2.200 W / 3 PK
Relax Impact-pomp	1.150 W

FILTRATIE EN VERWARMING	
Recirculatiepomp	250 W
Waterboiler	3.000 W
Filtertype	Patroon
High Performance Water Care	•

STROOMTOEVOER	
Vereist vermogen LOW AMP (W) / (A) aan 230 V	6.000 W / 25,9 A
Spanning	230 V / 400 V III

### Afwerking

#### Acrylkleur



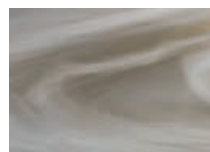
44 White



72 Cameo



59 Sterling



18 Sand

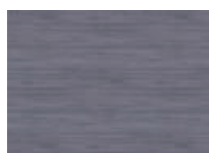


64 Pearl Shadow

### Raamwerkafwerking



Graphite



Thunder



Walnut



Butterfly



Dark Grey

### Accessoires



WALNOOT / GRAPHITE  
Spa trapje



Cover Lifter



Ontsmettingskit

AQUA VIA  
SPA